

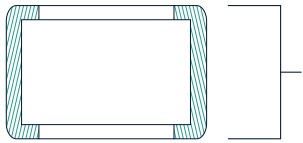
Fitting your Theo with your new cradle



What's in the box?

Make sure you have your device to hand before refitting it using the new cradle.

New Cradle

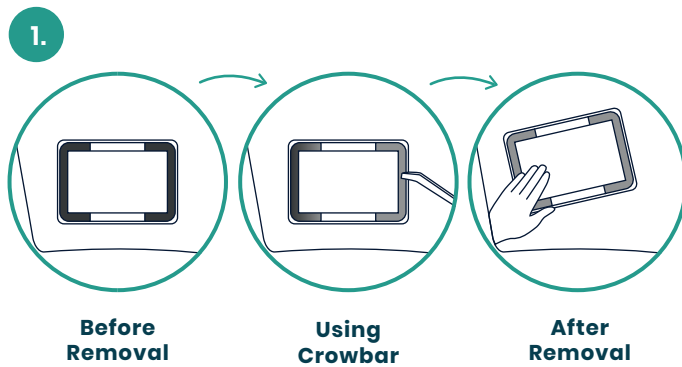


3M plastic film
(on each side)

Plastic Crowbar

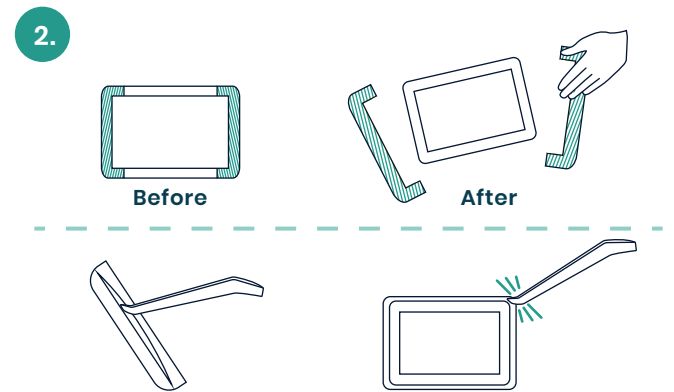


Removing, resetting and recharging your Theo device



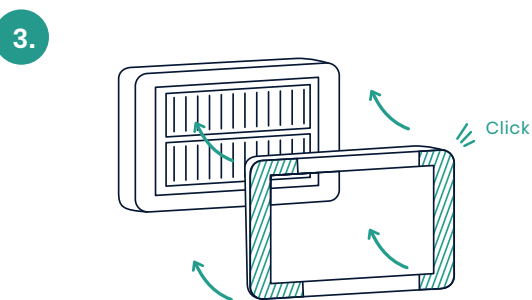
Remove the device from the windscreen using **the plastic crowbar provided**. Use the crowbar to edge the device off the windscreen.

Grab the bottom of your device with two hands and **pull the device upwards with force** so it starts to come away from the glass; keep pulling until it is completely off.



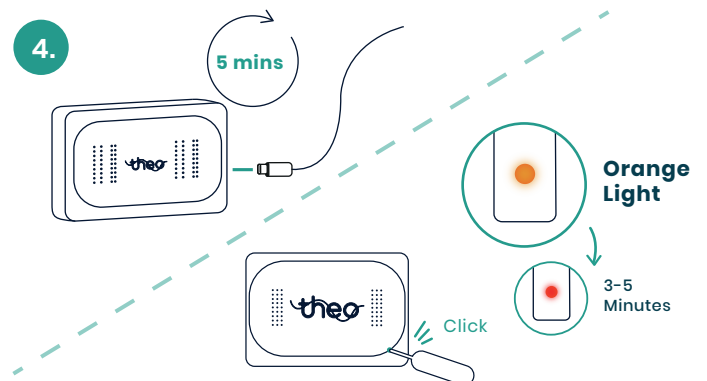
Place the narrow end of the crowbar into the gap between the device and the cradle, using the crowbar to leverage the device out of the cradle.

Repeat this process all the way round the device **until the cradle snaps** and it is removed from the device.



Have the new cradle we sent you to hand and clip it onto your device.

You'll hear a clicking sound on all four corners, meaning the cradle is on the device correctly.



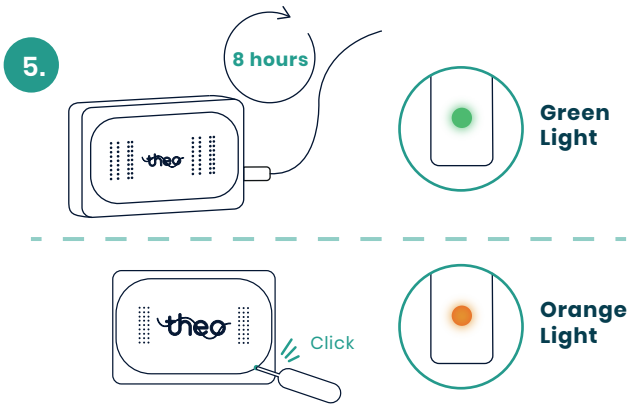
Plug your device into a mains socket inside your home using a USB-C cable and wait **5 minutes**.

After 5 minutes, please **reset your device**. The device is reset by pressing a small pin into the hole in the bottom right-hand side of the device until you hear a click and the light turns orange. You should see an **orange light** appear followed by a red light after a few minutes

Turn over for further steps →

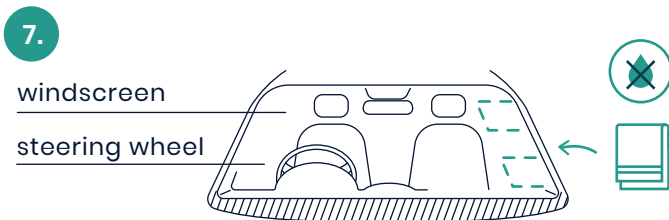
Reinstalling your Theo to your windscreen in its new cradle

Reminder: Don't forget to upload a new photo using the app.



Leave your device plugged into a mains socket overnight for around **8 hours**; a **green light** indicates the device is fully charged.

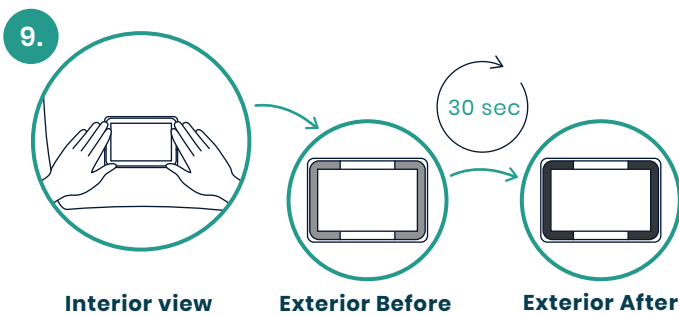
Once you see a green light, unplug your device and **reset it again** by pressing the small pin into the hole in the bottom right-hand side of the device until you hear a click, and the light turns orange.



Ensure the **inside** of your windscreen is **clean and dry** in the area where you are locating your Theo.

Use either a lint free cloth or kitchen towel to completely dry the area before installing your device.

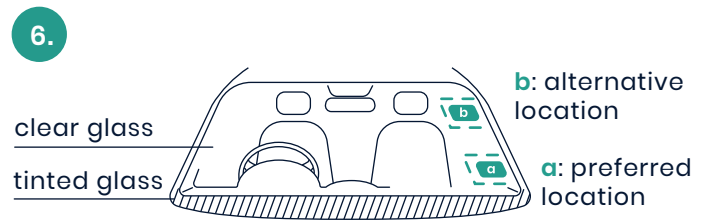
Do not use any chemicals when cleaning the windscreen and make sure it is **completely dry**, using the windscreen heater if necessary.



Theo should be readable from the inside to ensure your device is correctly orientated. In the same area you cleaned, press the device firmly against your windscreen from inside your vehicle.

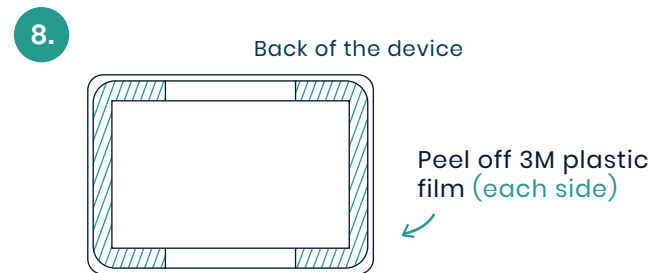
Apply firm pressure to the device for at least **30 seconds** to ensure it is securely stuck on the inside of your windscreen.

Ensure your device is placed on clear glass and can easily absorb sunlight.
Press firmly on the whole device until the adhesive, viewed from the outside, is the same colour all the way round and any air bubbles have disappeared.



When deciding where to locate your Theo, please pick the **bottom left hand side of your windscreen**. If this isn't possible, please locate your Theo in the top left hand side of your windscreen.

Ensure the solar panel can access direct sunlight. Do not install your Theo device too close to the dashboard or on tinted glass.



Gently peel off the 3M plastic film in each corner of the windscreen cradle.

Ensure you do not remove the foam attached to the back of the device.



It's now time to take a photo of your newly installed device.

Open your insurance app, follow the instructions within the app to take a photo of your installed device, making sure to clearly show both the **correctly installed Theo device** and your **vehicle registration number** in the photo.

Once you have followed all these steps in the order above you have successfully reinstalled your Theo device.